

# How to read your water meter



To read your water meter simply follow these steps:

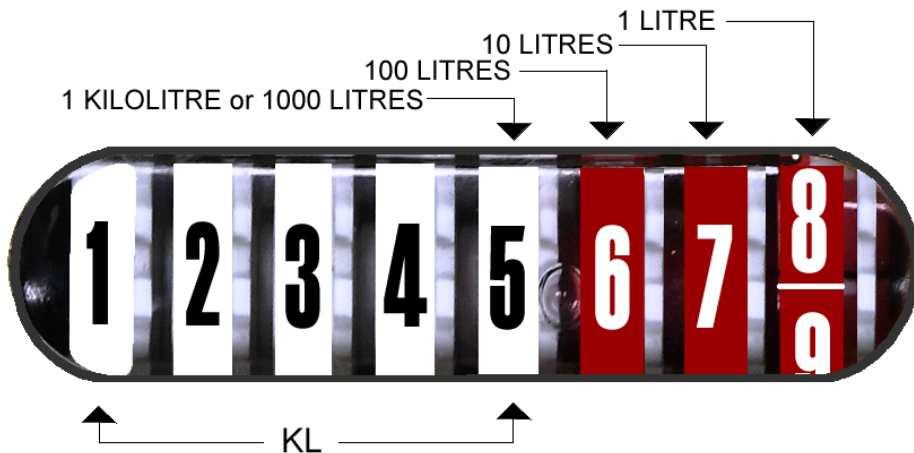
**Step 1:** Lift the lid on the registration dial to view the meter reading.

**Step 2:** Use the diagram shown to interpret the numbers relating to the amount of water being used.

**BLACK numbers** (on white background) = kilolitres

**WHITE numbers** (on red background) = litres **NOTE:** 1,000 litres = 1 kilolitre

The diagram (*below*) reads 1,234 kilolitres and 567 litres.



To report  
water leaks & sewage  
spills phone:  
07 5475 7272 or  
1300 007272

An average home in the Sunshine Coast region uses 20 kilolitres of water per month. The following table depicts a sample usage record that you and your family could adapt to monitor how much water is being used in your home.

How to monitor your water usage:

DATE	READING	USAGE	COMMENTS
1 Jul 2009	1234. <b>567</b>	-	First reading
15 Jul 2009	1242. <b>967</b>	8.4 kilolitres	No rain, watered garden
31 Jul 2009	1254. <b>367</b>	11.4 kilolitres	Washed car, visitors
<b>July TOTAL</b>	1254. <b>367</b>	19.8 kilolitres	Well done

This empty table is provided for your own records:

DATE	READING	USAGE	COMMENTS
		-	First reading